



ValueOptions® Inc.

PROVIDER ALERT

INTERNET EXPLORER 11 AND PROVIDERCONNECT COMPATIBILITY

JANUARY 21, 2016

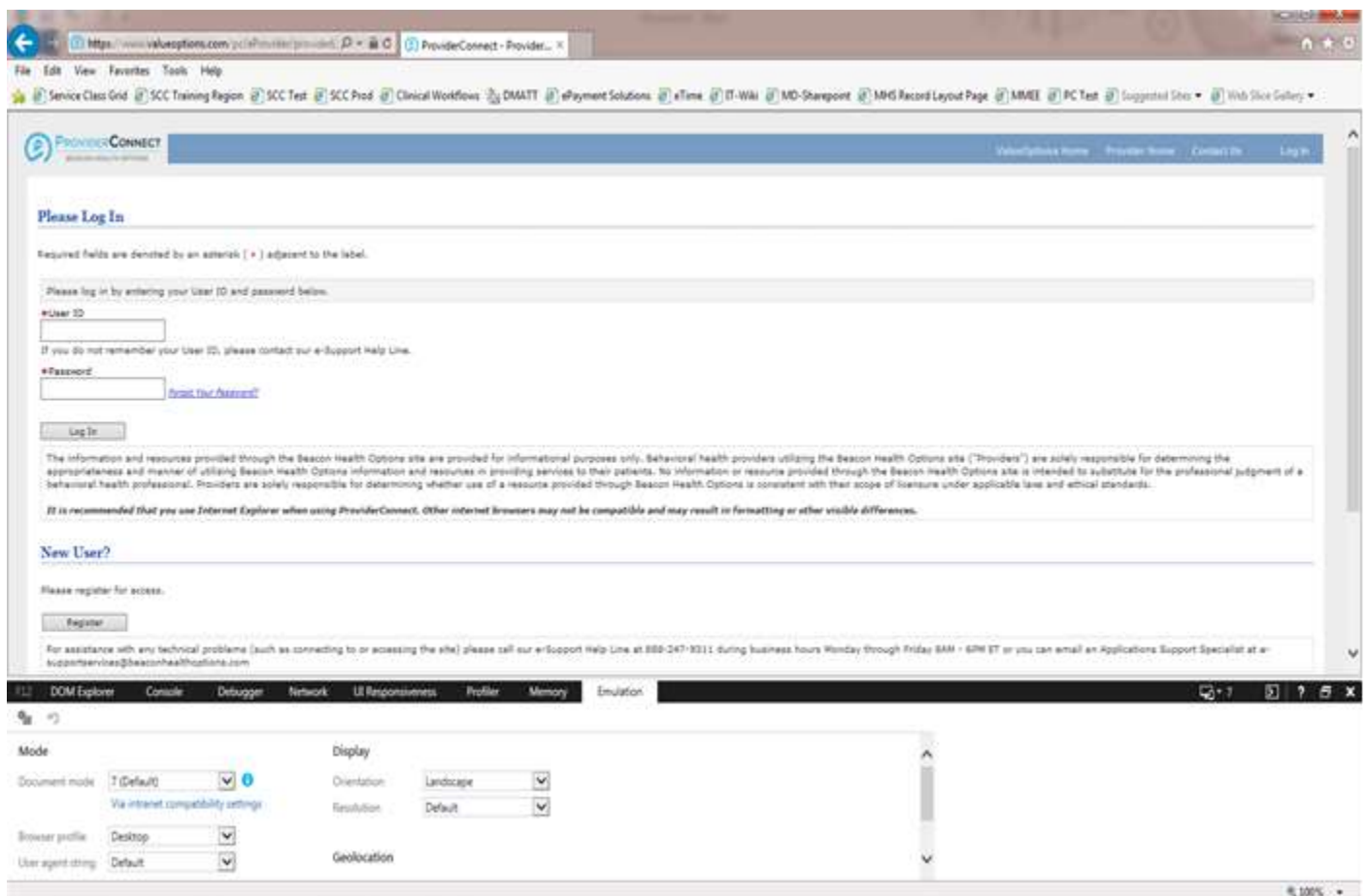
The approved supported browser for access to ProviderConnect is Internet Explorer. For any users on Internet Explorer 11, please make sure your browser is set to the "Edge" Document Mode as follows:

1099 Winterson Road
Suite 200
Linthicum, Maryland 21090
<http://maryland.valueoptions.com>



ValueOptions® Inc.

- 1) Open Internet Explorer 11 and press **F12** to enter “**Developer Mode**”. You will see the following pop-up on the screen:

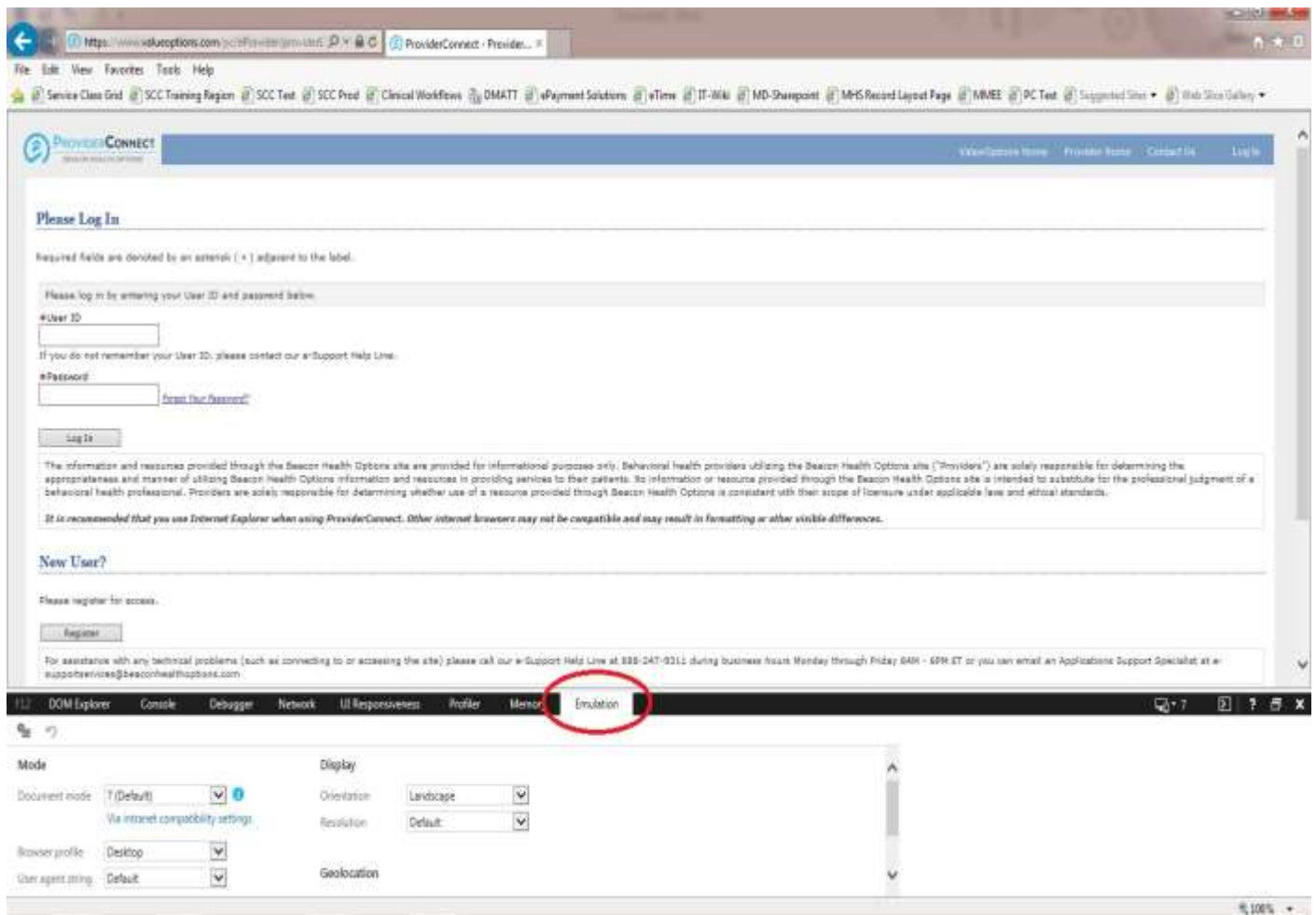


1099 Winterson Road
Suite 200
Linthicum, Maryland 21090
<http://maryland.valueoptions.com>



ValueOptions® Inc.

2) Click on the “Emulation Tab”

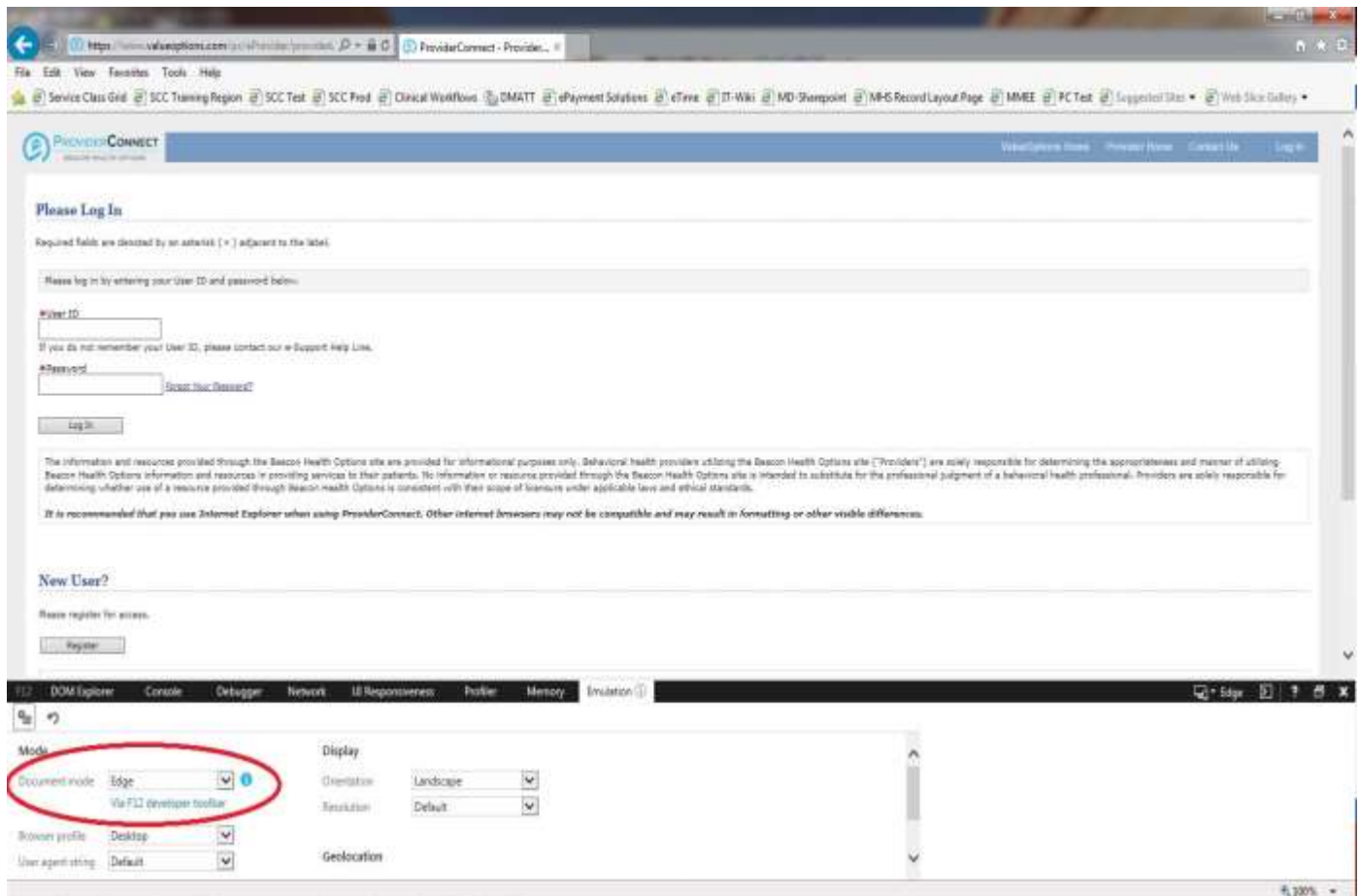


1099 Winterson Road
Suite 200
Linthicum, Maryland 21090
<http://maryland.valueoptions.com>



ValueOptions® Inc.

3) Click on Drop Down Menu for “**Document Mode**” and change it to “Edge”.



4) Once done press F12 to close “**Developer Mode**”.

If you have further questions, please feel free to send them to marylandproviderrelations@valueoptions.com .

1099 Winterson Road
Suite 200
Linthicum, Maryland 21090
<http://maryland.valueoptions.com>